



vigipool  
by CCEI

# VIGILINE

CONNECTED WIRELESS WATER LEVEL  
CONTROL FOR SKIMMER POOLS

## WIRELESS TECHNOLOGY

Unlike wired float systems, VigiLine operates via LoRa®, wirelessly and without cabling. Suitable for both new builds and renovations, it integrates seamlessly into any project.

## ULTRA-RELIABLE PRECISION

Where float systems are approximate and prone to jamming, VigiLine uses an intelligent level sensor: the Skimni.

## BUILT-IN LEAK DETECTION

VigiLine does more than just refill: thanks to its integrated water meter, it analyzes water consumption to limit waste, preserve resources, and reduce costs.



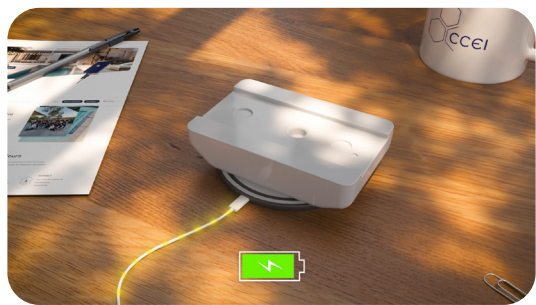


### Simple & Quick Installation

Install VigiLine in just a few minutes, with no drilling or construction work required. A solution designed to adapt easily to your pool.

### Compact & Universal

A compact format that fits in most skimmers on the market. Discreet, efficient, and perfectly integrated into your existing installation.



### 100% Wireless & Induction Rechargeable

A fully waterproof wireless sensor, rechargeable by induction for total peace of mind. Long battery life: on average, one charge per season is sufficient.

### Customization Options

Available in two sensor colors to match your pool.



### Complete Ready-to-Install Solution

Everything is included for immediate installation: control box, sensor, water meter, solenoid valve, filter, induction charger, fittings, etc.

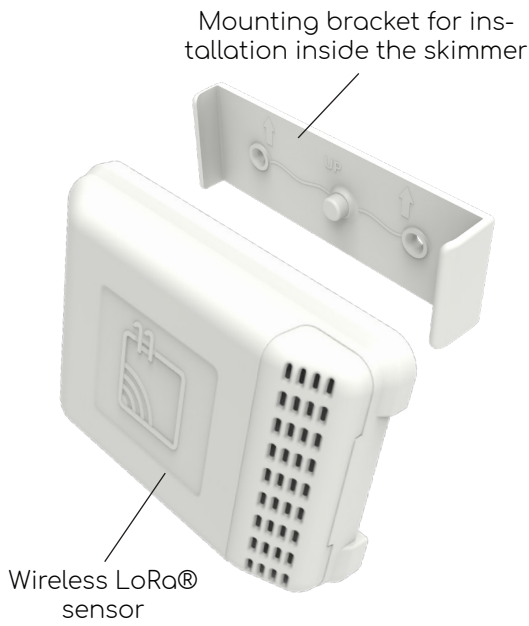
### Works Even with the Cover Closed

VigiLine regulates the water level even when your pool cover is closed. Automatic management, hassle-free, all year round.

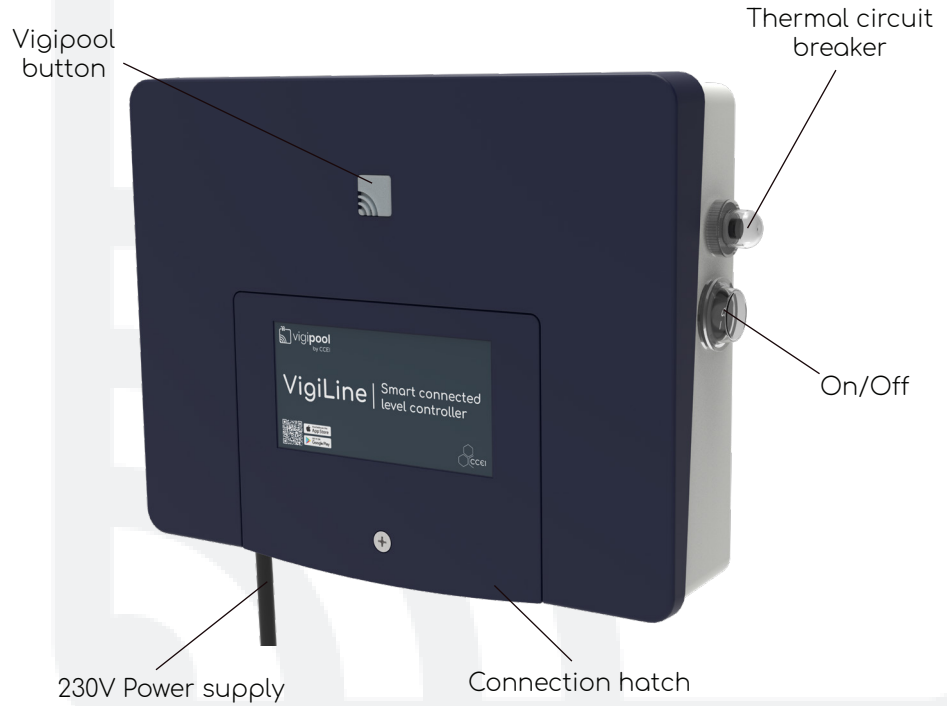


# PRODUCT PRESENTATION

## Skimni Sensor



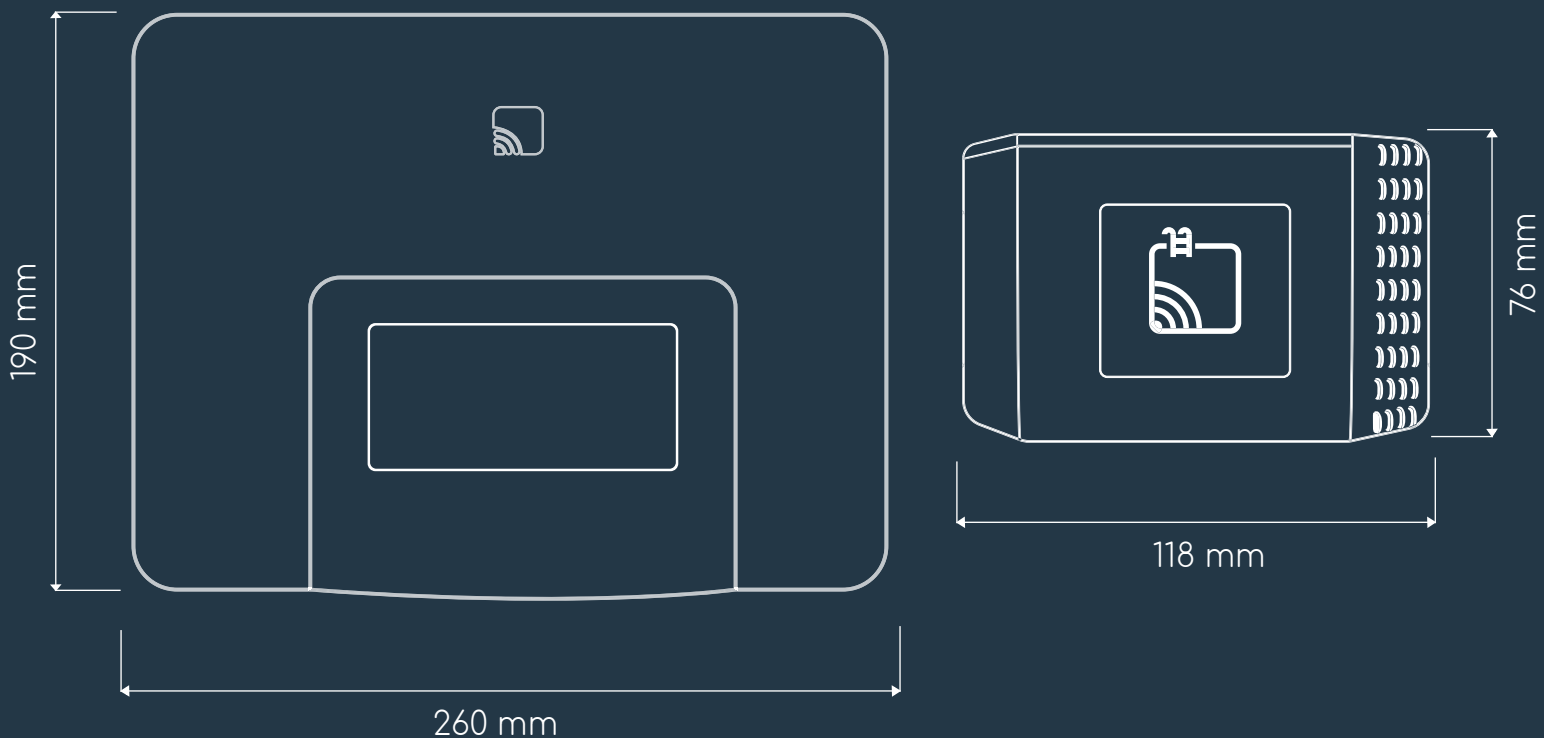
## Control Box



The illuminated button allows you to check the status of your VigiLine at a glance:

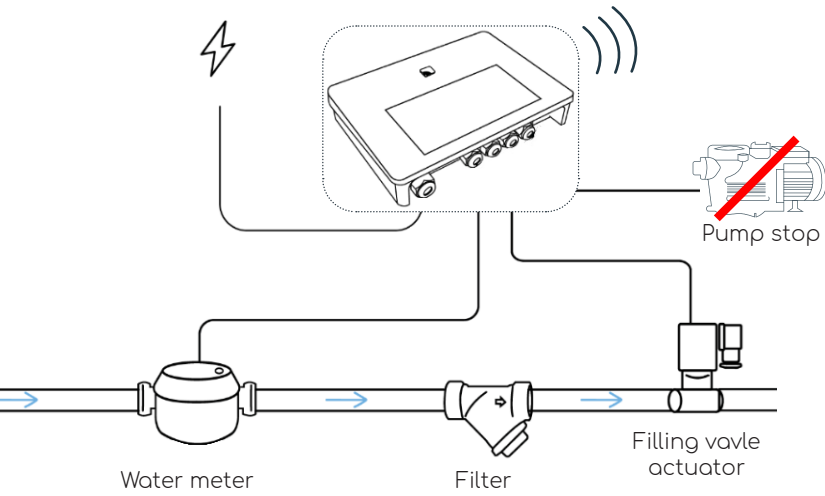


# PRODUCT DIMENSIONS

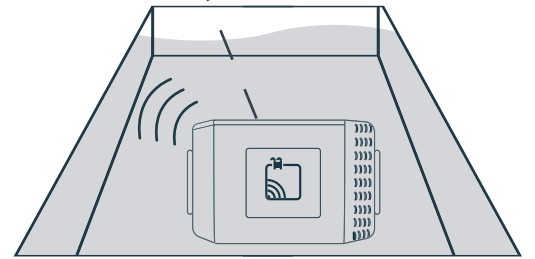
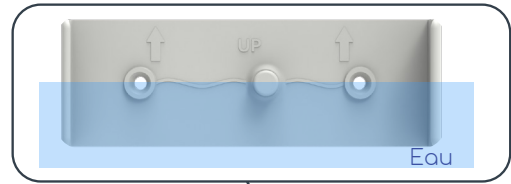


# INSTALLATION RECOMMENDATIONS

Connect VigiLine directly to the distribution panel.  
Do not plug into a standard outlet to avoid accidental disconnection

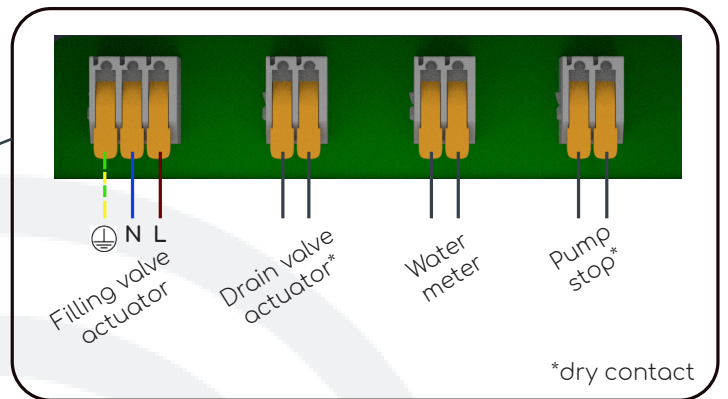
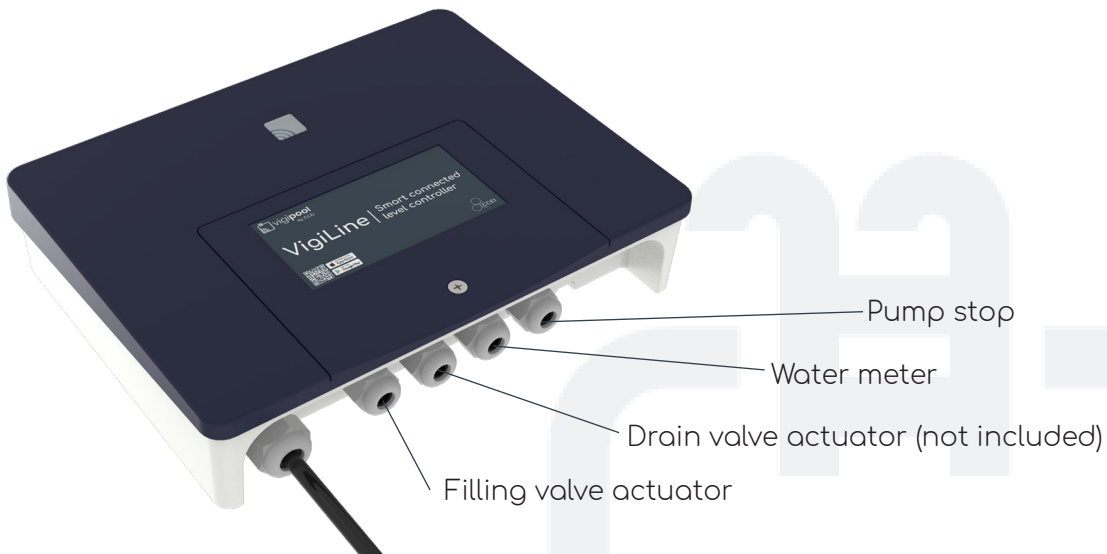


Integrated positioning mark on the sensor bracket for simple and precise placement.



Skimni (sensor) installed in the pool's skimmer.  
LoRa® communication with the technical room.

# ELECTRICAL CONNECTION



# VIGILINE IN THE VIGIPOOL APPLICATION

## CURRENT Screen

## CONSUMPTION\* Screen

Skimni charge status

Water level status and refill indication

Display in m<sup>3</sup> or €

Daily, Monthly, Yearly view

Detailed consumption

\*Requires Wi-Fi connection

## WHAT IS VIGIPOOL?



Vigipool is a range of products controlled from a single smartphone application, allowing you to keep your technical room in your pocket at all times. Within the app, centralize your technical room devices and control equipment connected to your home Wi-Fi from anywhere in the world. Vigipool gives you access to VigiLine and real-time monitoring of your technical room.

### A SCALABLE SOLUTION :

For an even more complete installation, add Vigipool-compatible devices to your technical room and unlock new features in your app (filtration control, LED lighting control, etc.).



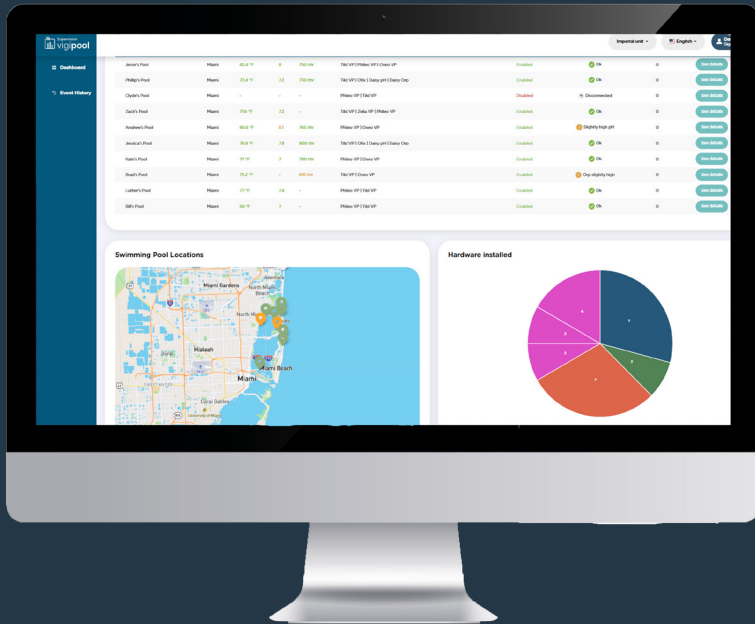
GET IT ON  
**Google Play**

Available on the  
**App Store**



## VIGIPOOL SUPERVISION

With Vigipool Supervision, pool professionals can monitor and manage their entire pool portfolio in real time.



- ✓ Customer pool monitoring
- ✓ Intervention scheduling via interactive map
- ✓ Instant overview of the portfolio
- ✓ Alert reception and management
- ✓ Access to pool history

<https://supervision.vigipool.com>

## MAIN TECHNICAL SPECIFICATIONS



A simple scan is all it takes to discover Vigiline in video



Model	Supply	Dimensions	Skimni Color	Included equipment	Reference
Vigiline	230 Volts	Control box: 260x190x54 mm Skimni: 118x76x27 mm	White (RAL 9003)	Skimni, water meter, solenoid valve, filter, installationsupports, accessories	PF10L111
			Anthracite (RAL 7016)		PF10L110